

# HYDRAULIC DOUBLE-SCISSOR LIFT

# JUMBO LIFT NT

## FLEXIBILITY & TECHNOLOGY



WITH PATENTED  
**HyperFlow**<sup>®</sup>  
technology

WITH  
TECHNOLOGY



### THE MULTI-TASK EXPERT

- ✓ Very low construction height for above or in-ground installation
- ✓ Adjustable length of the lifting platforms
- ✓ NT and patented HyperFlow<sup>®</sup> Technologies:  
100% hydraulic, 100% safe

**3200 KG | 3500 KG | 4000 KG**

HYDRAULIC DOUBLE-SCISSOR LIFT

## JUMBO LIFT NT

**Fast, flexible and always ready**

A flexible double-scissor lift, suitable for a large range of works and vehicles, from small cars to SUVs and sports cars.

Long-lasting and safe, it features the best technology on the market: the patented hydraulic system HyperFlow®. No switches\*, no air, no problems.

\* For above ground installation

### A multi-tasking expert

- ✓ Suitable for a large range of vehicles up to short wheelbase vans
- ✓ Flexible lifting platform: Access ramps can be blocked and unblocked with one hand to adapt the platform length to long and short vehicles
- ✓ Flat construction: Suitable for very low clearance vehicles

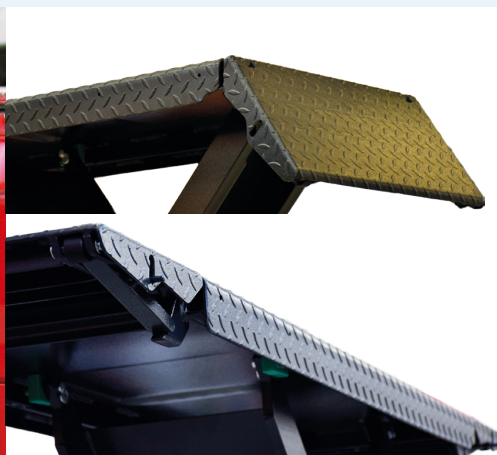
### Flexible width

Standard distance between ramps of 800 mm can be changed upon installation to adapt to your needs

**JUMBO LIFT NT 3200, 3500, 4000: WE OFFER THE RIGHT CAPACITY FOR ANY WORKSHOP**



Very flat construction: Perfect for sports cars



Adjustable ramps with flaps: Easy to lock and unlock with one hand



In-ground or above ground installation



RECOMMENDED BY  
BMW\*



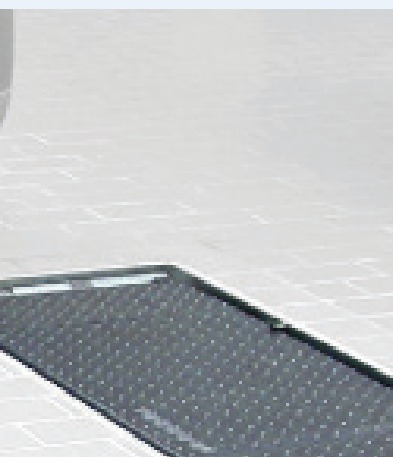
## 6 reasons why the JUMBO NT is low maintenance

With its **compact oil-submerged motor** and **high quality steel construction**, the JUMBO NT is built to be long-lasting and low maintenance. The JUMBO **does not need any mechanical lock** thanks to the **redundant hydraulic system** and **automatic synchronization**. **Almost wear free** with no electrical or pneumatic components and no mechanical lock. All connections are fitted with lubricating points, ensuring smooth operation over time.



## TOP FEATURES AT ONE GLANCE

- **Adapts to a wide range of vehicles**  
Flat construction and adjustable lifting platform
- **Lifting height**  
Effective lifting stroke of 2000 mm
- **HyperFlow® technology**  
Low maintenance and perfect synchronization over time
- **Flexible**  
Flexible installation width, no air access needed, easy to relocate







## CHOOSE YOUR JUMBO SIZE

JUMBO LIFT NT	3200	3500	4000
Lifting capacity (kg)	3200	3500	4000
Lifting time approx. (sec)	35	35	35
Lifting height (mm)	2000	2000	2000
Drive-on height (mm)	105	105	135
Installation depth (mm)	105	105	135
Recommended total width (mm)	2020	2020	2020
Platform width (mm)	610	610	610
Platform length (mm)	1460–2060	1460–2160	1460–2160
Motor (kW)	3	3	3
Power supply (V/Hz)	400/50	400/50	400/50

ACCESSORIES	3200	3500	4000
Rubber truncated pyramid pad	✓	✓	✓
Polymer pad 50 x 150 x 340 mm	✓	✓	✓
Polymer pad 100 x 150 x 340 mm	✓	✓	✓
Tuning ramps for low clearance vehicles / set = 4 units	✓	✓	✓
CE-Stop	✓	✓	✓

OPTIONAL SURFACE TREATMENT	3200	3500	4000
Oxygen care coated for corrosive environment	✓	✓	✓
Fire galvanized	✓	✓	✓

### ACCESSORIES



Truncated pyramid pad



Polymer pads  
50 x 150 x 340 mm



Polymer pads  
100 x 150 x 340 mm

**More accessories  
available**